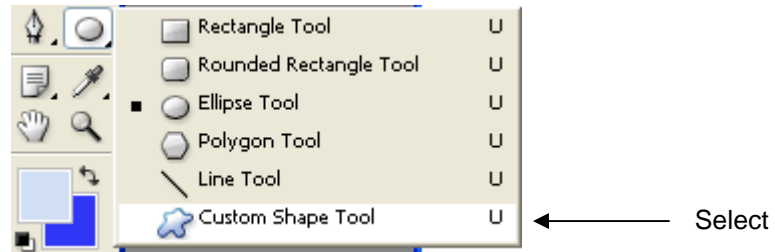


Design Workshop - Badge Tutorial

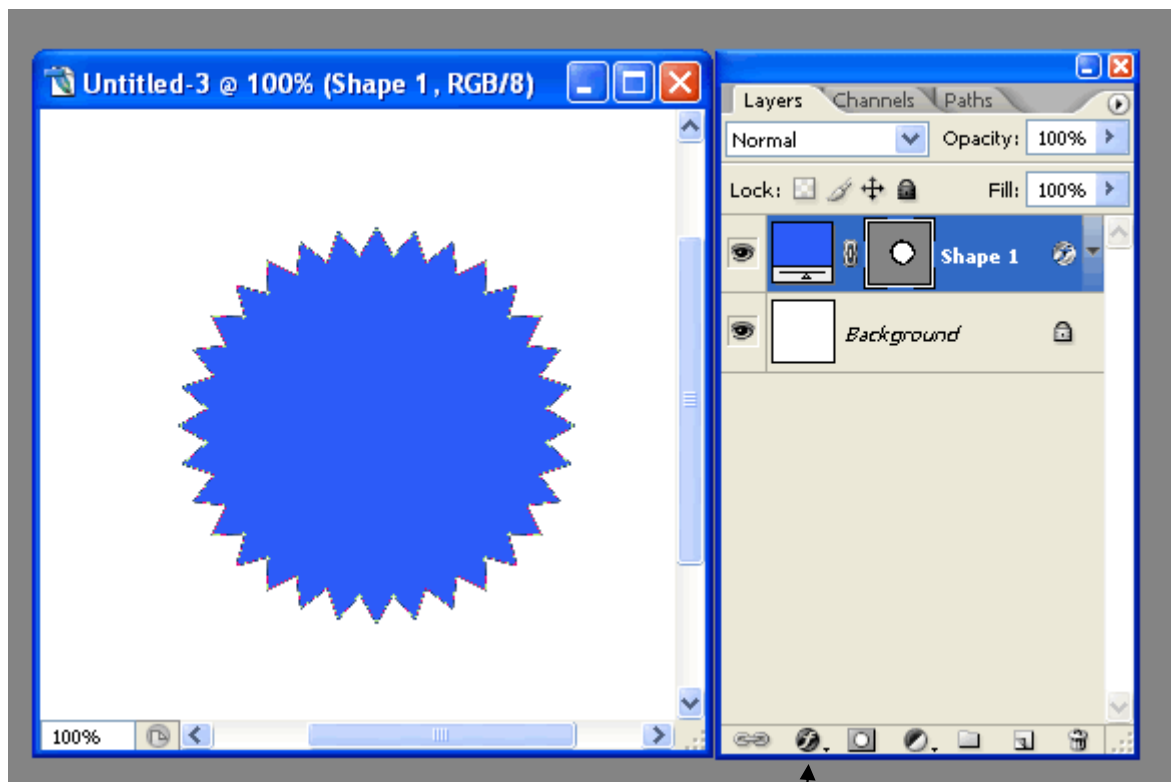
Start with a new document maybe 500x500 pixels so giving you lots of room with a white background. To do this click on File at the top menu bar and select New.

Then select the custom shape tool from the tools window. Then choose the seal image and select your base colour. Tip: if you are new to Photoshop you will need to right click the mouse button to see the drop down list.



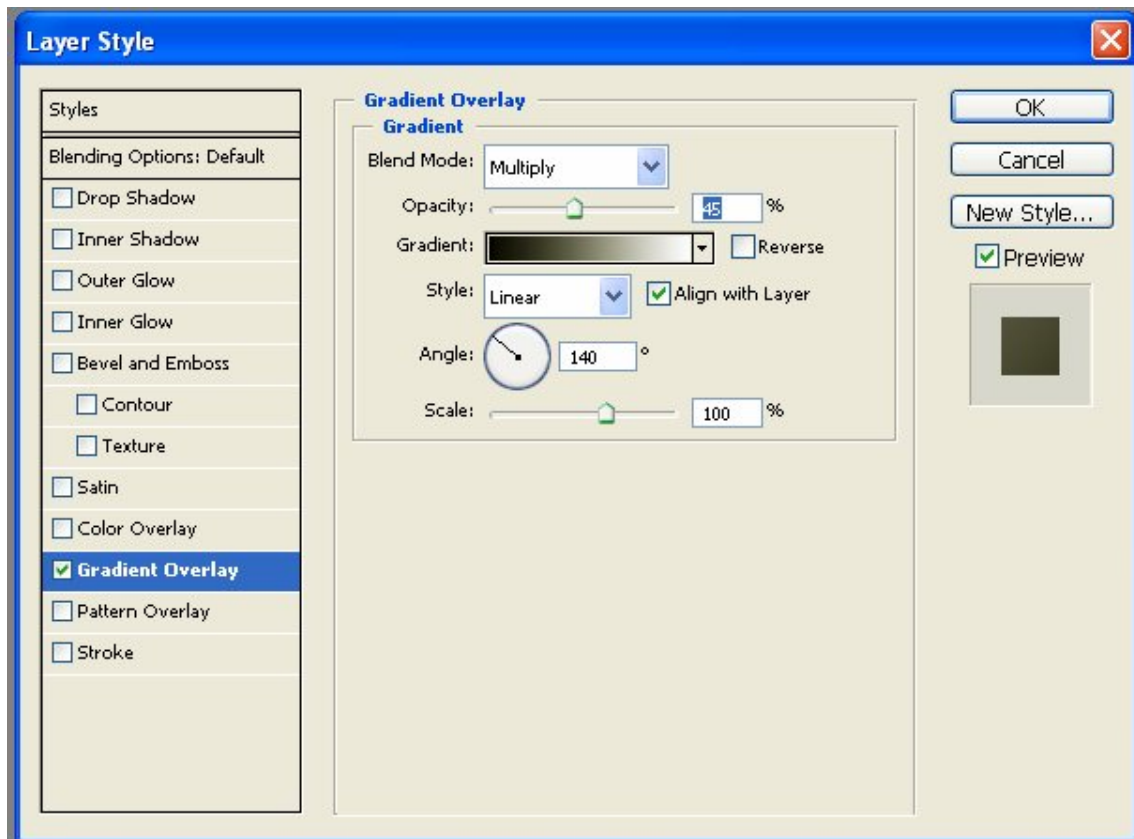
Select

Once you have chosen your desired colour draw the shape holding down the Shift key, this helps the shape keep more in proportion. Next click on the F symbol on the Layers window and select Gradient Overlay. If you do not have the Layers window click the Windows tab on the top menu bar and select Layers.

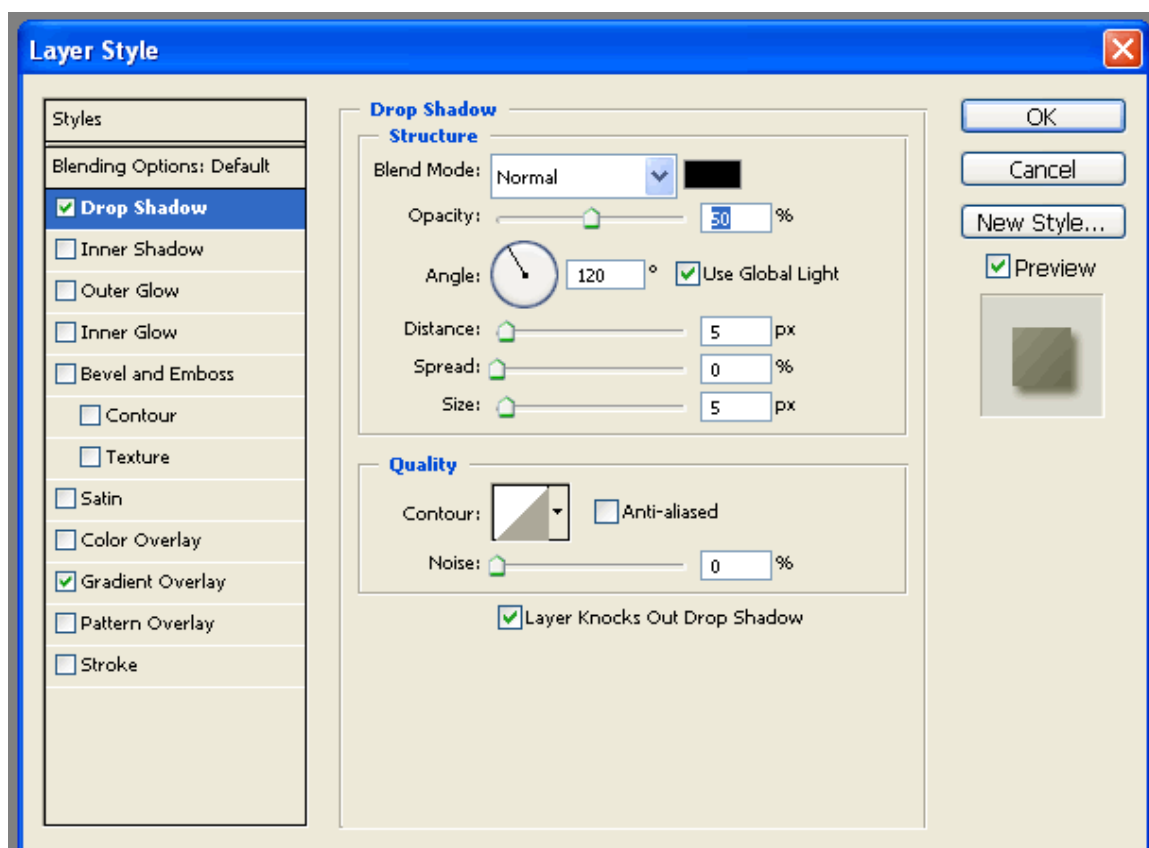


Select

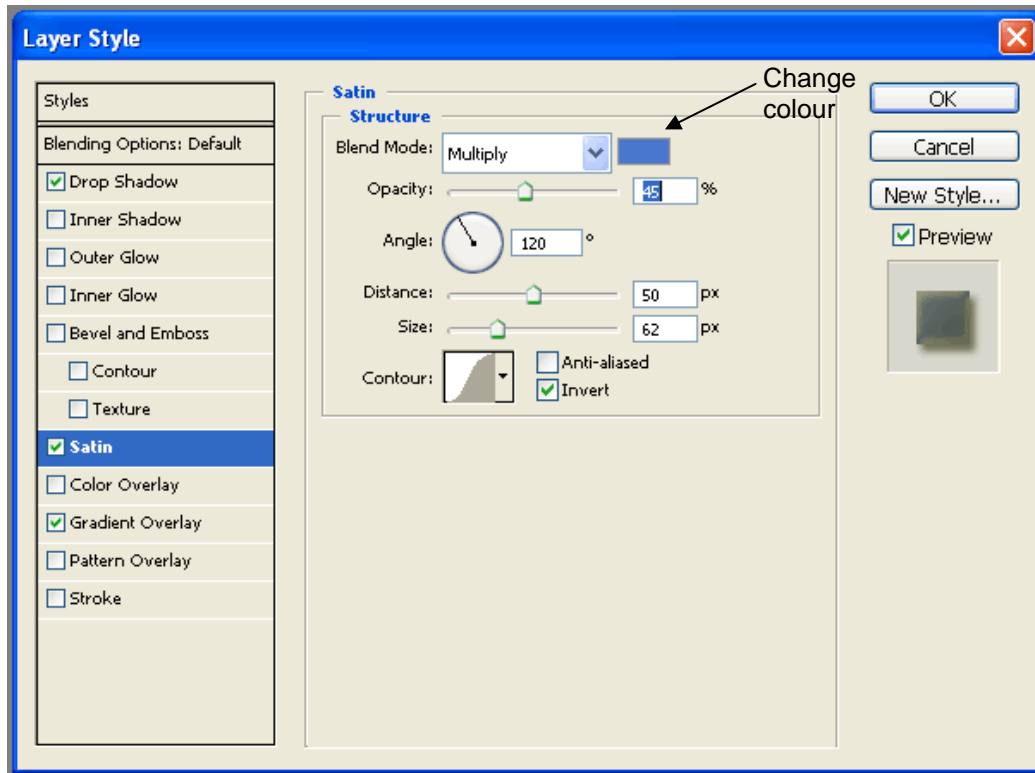
In this tutorial we have used the black/white gradient with Multiply Blend Mode and Opacity of 45% but experiment and see what you like most. We have also set the angle to 140.



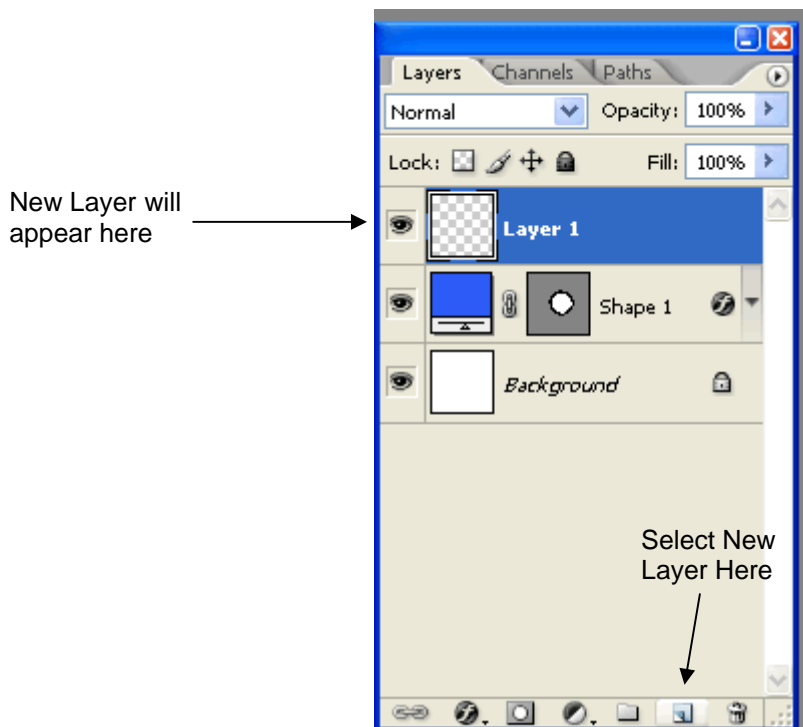
Now we need to add some shadow, click on the F symbol again on the Layers window and select Drop Shadow. We have used Blend Mode Normal, Opacity 50%, Angle 120, Distance 5px, Spread 0%, Size 5px, but again experiment and see what happens using this effect tool and the others.



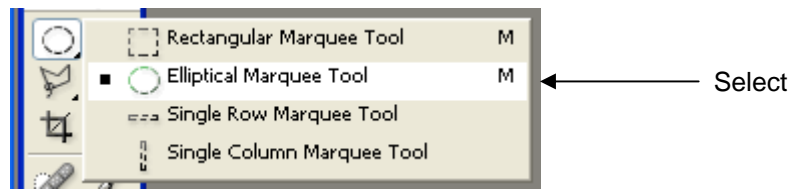
We have also added another effect to give the image a shine. Click on the F symbol again on the Layers window and select the Satin effect. We have used Blend Mode Multiply, 45% Opacity, angle 120. Make sure to change the colour, we have used the original colour used at the start of the tutorial. We have used Distance to 50px and Size 62px but adjust the distance and size until you fill happy with the results.



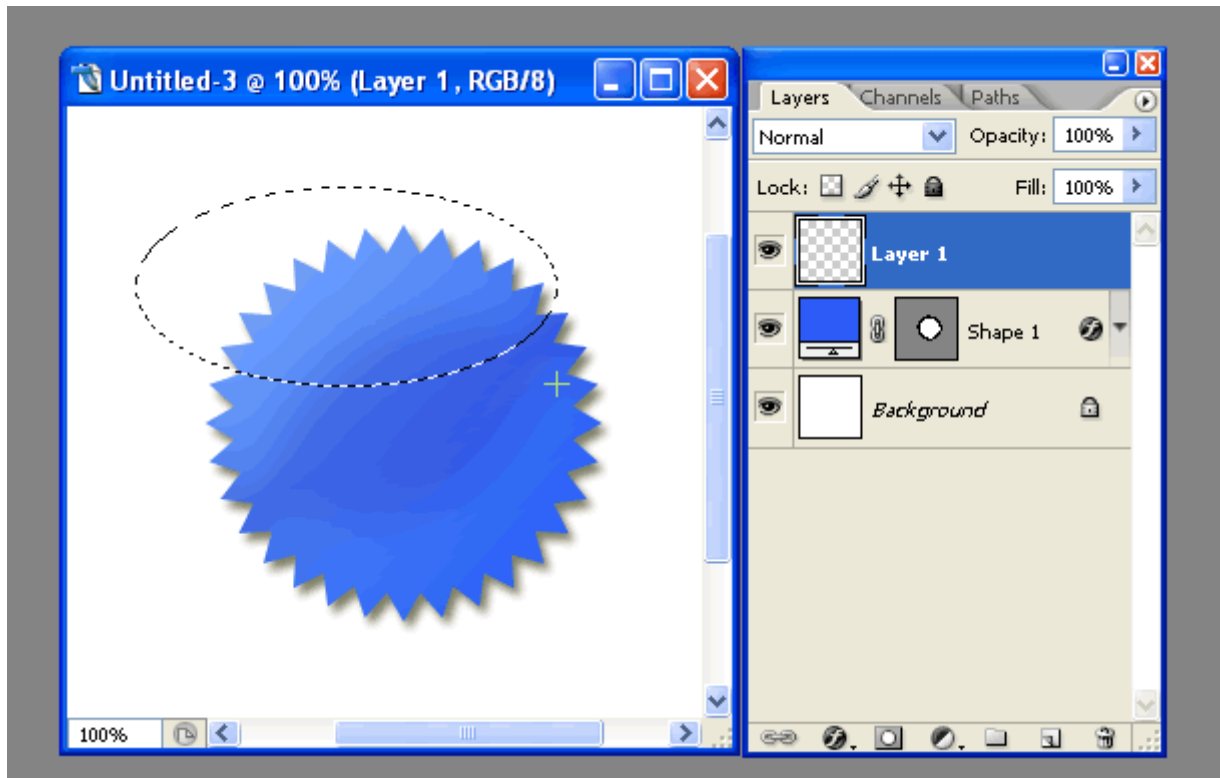
The next step is to add a new layer. To do this click on the new layer symbol on the Layers window. You will now see that a new layer has been created called Layer 1. For this tutorial we are not going to name the layer but in bigger future tutorials we will name these layers to make it easier to identify them.



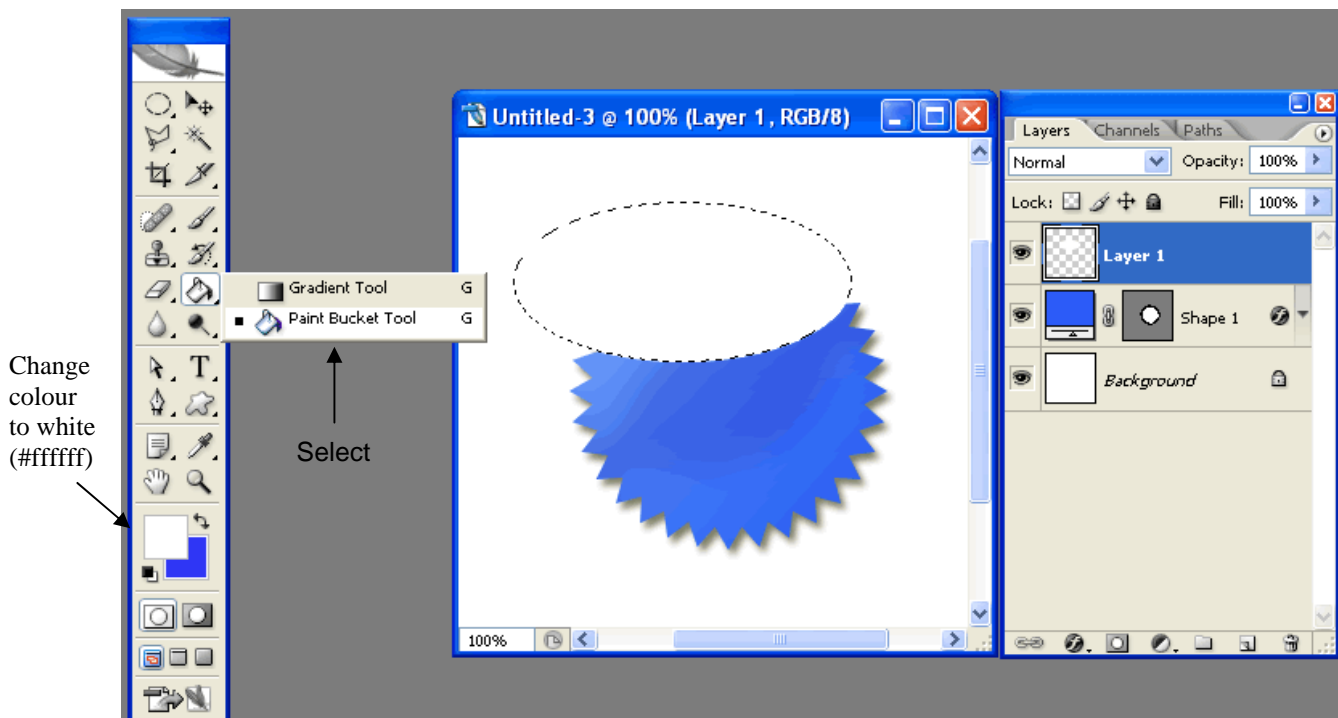
We are now going to add a kind of lighting effect. To do this select the Elliptical Marquee Tool from the Tools window.



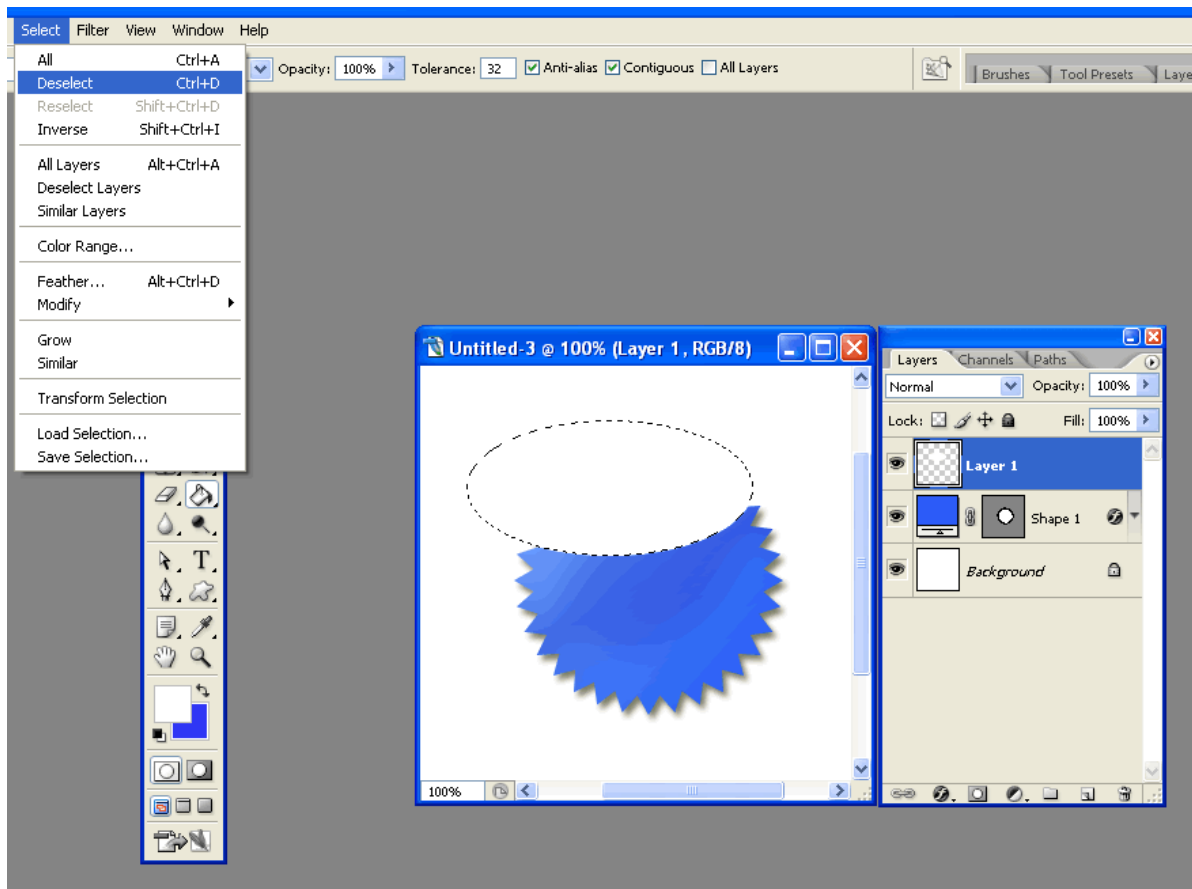
Use the Marquee Tool to draw something like below.



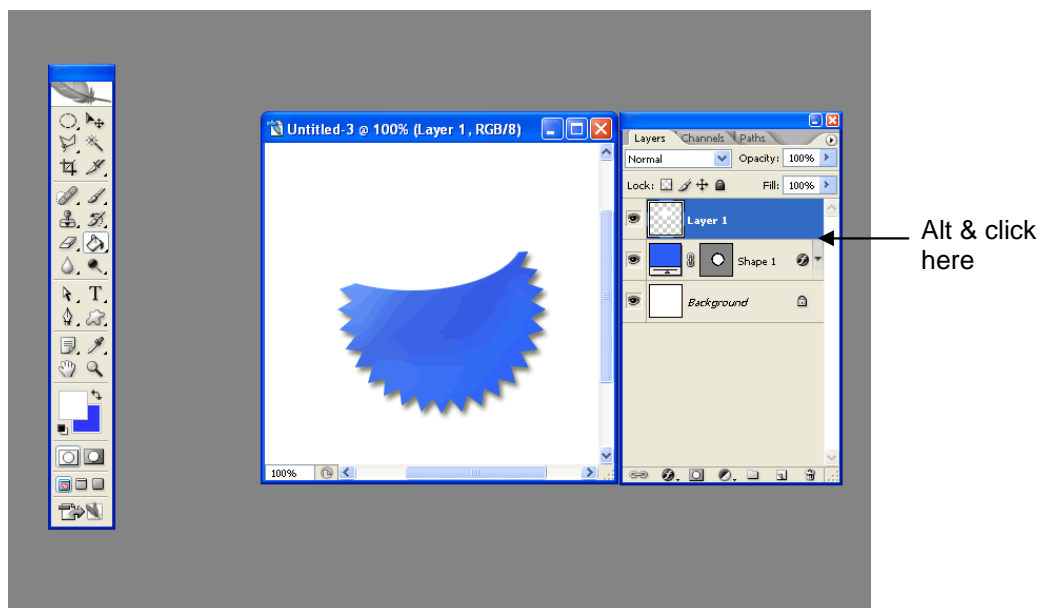
Select the Paint Bucket Tool from the Tools window and change the colour to white, then click on the middle of the marquee.



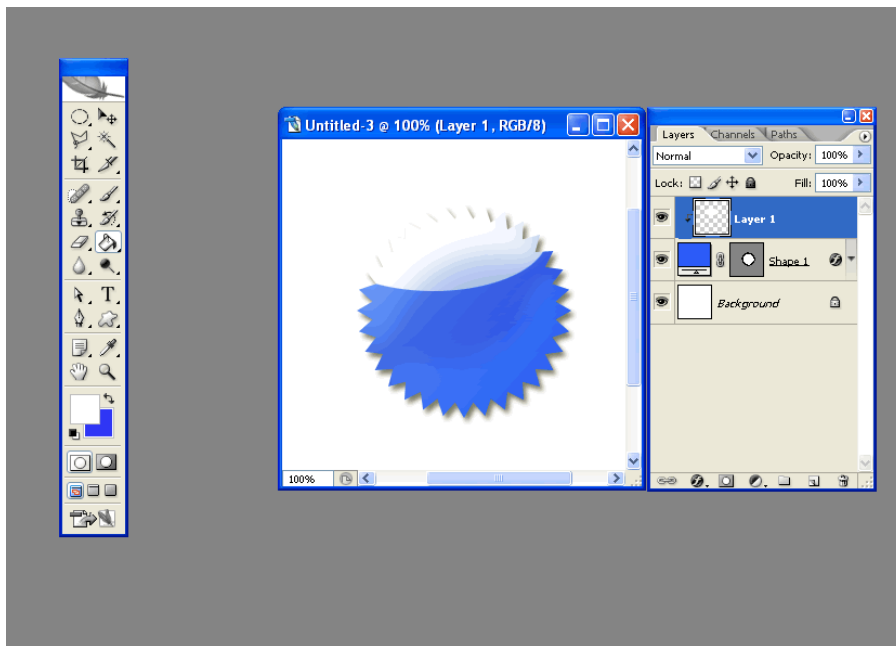
From the Select menu click on Deselect.



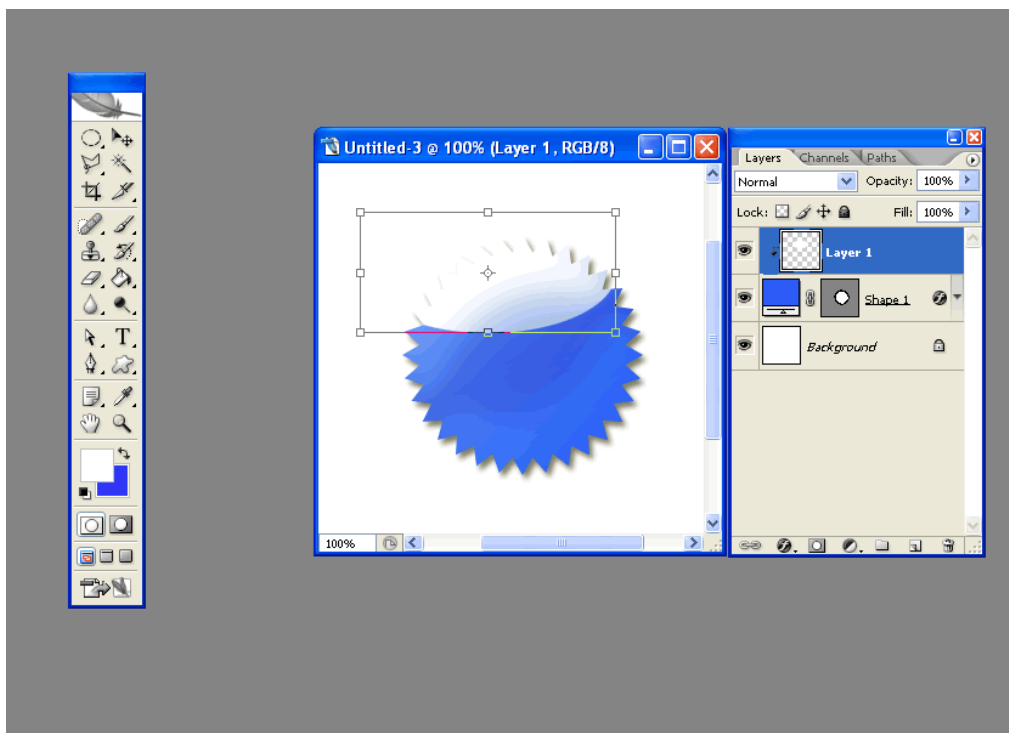
This is the image you should now see below. You now need to combine Layer 1 with Shape 1. To do this hold down alt and click the line between layer 1 and shape 1



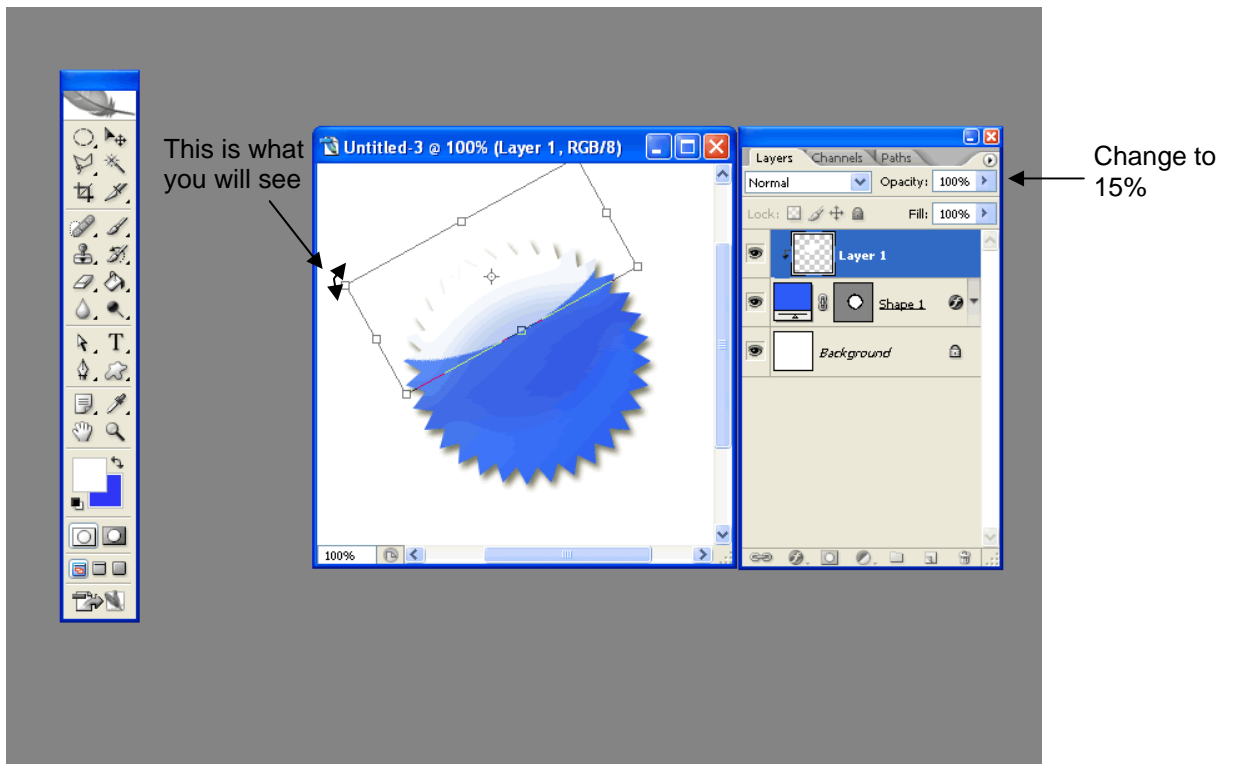
This is what you will then see below.



Hold down Ctrl and T, you have now selected the shape you just created.

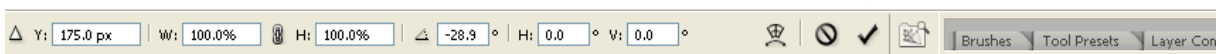


We now want to move the position of the lighting effect to match the gradient angle. Move the mouse just past the top left hand box and you will see a rotate symbol. Hold down the mouse button and rotate to the correct position. You can also move the selected by holding down the mouse button in the middle of the selection and dragging it.

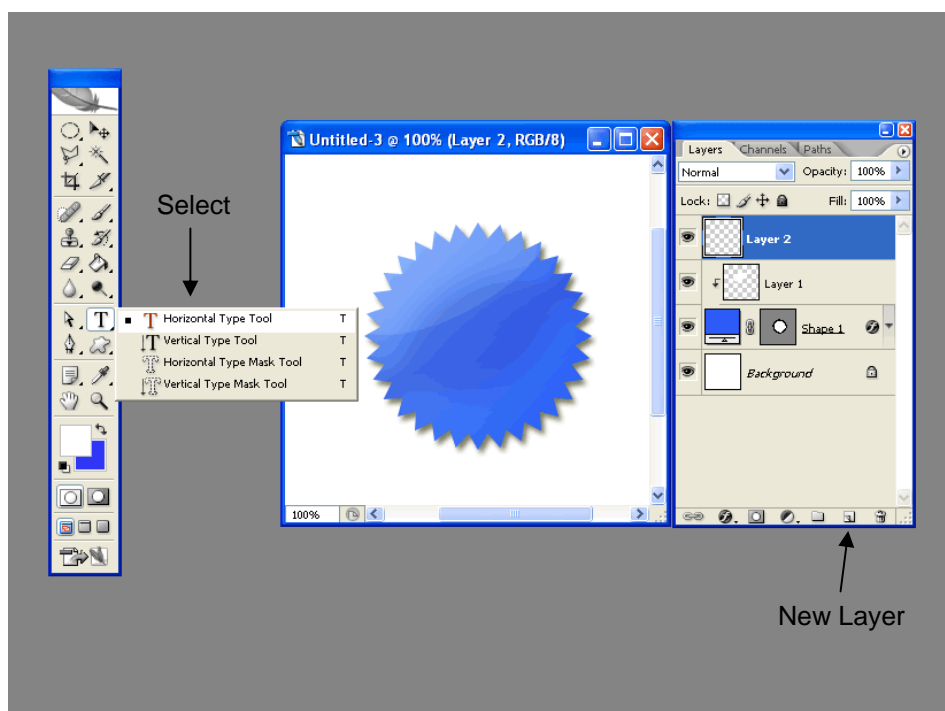


Now alter the Opacity in the Layers window to your desired amount, we have used 15%. Click on the green tick at the top of the screen, this will accept the changes you have made.

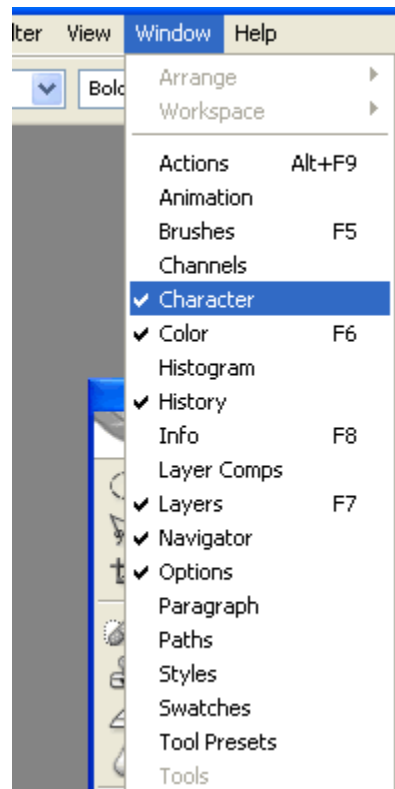
Click Here



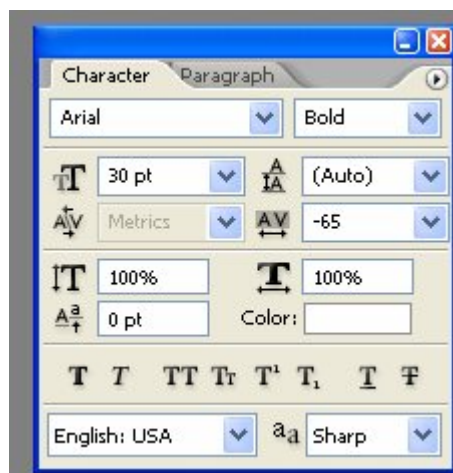
Time for some text. Add a new layer as before and select the Horizontal Type Tool.



Now click on the image and type your text. If the Character window is not already open click the windows tab and select Character.



This window will now appear. Here you can change the appearance of your text. Try different fonts until you find one you like.



We now want to rotate the text to the angle used for the gradient and other effects. Hold down Ctrl and T, you have now selected the text you just created. As before move the mouse just past the top left hand box and you will see a rotate symbol. Hold down the mouse button and rotate to the correct position. You can also move the text by using the Move tool on the Tools window.

And that's it! You have completed your Badge.

